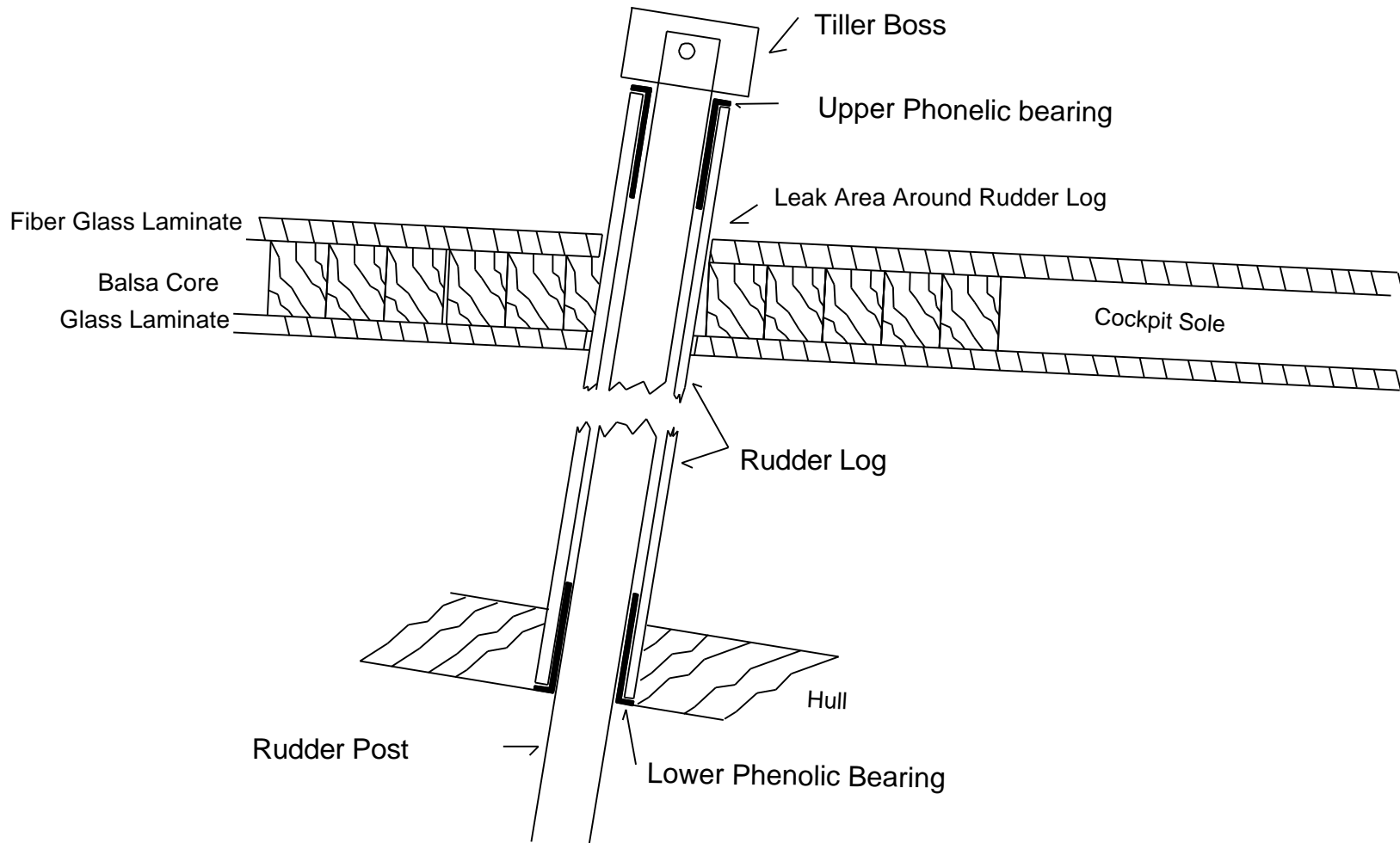


PEARSON RENEGADE RUDDER LOG AND BEARING ASSEMBLY



Upper Rudder Bearing - Pearson Renegade

Note:

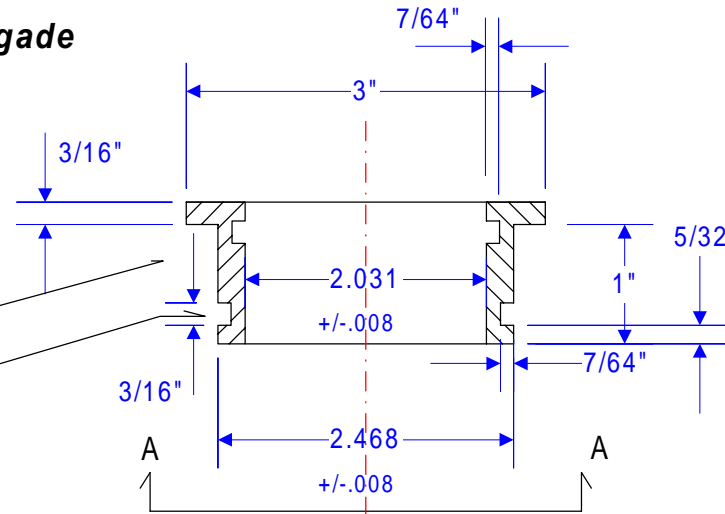
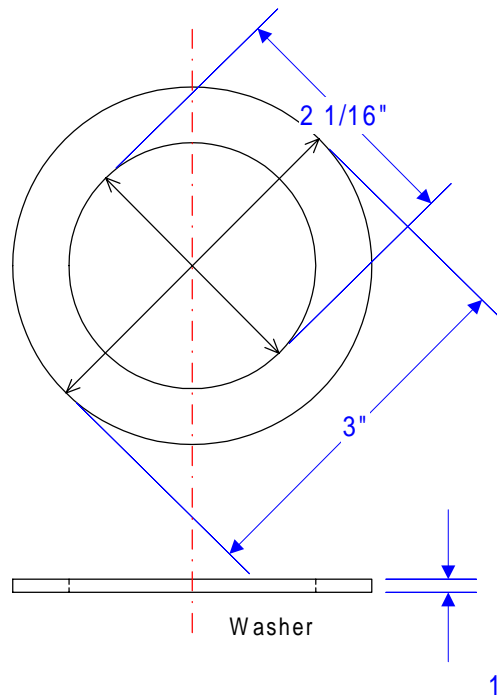
Where not shown tolerance is +/- 1/32"

Material:

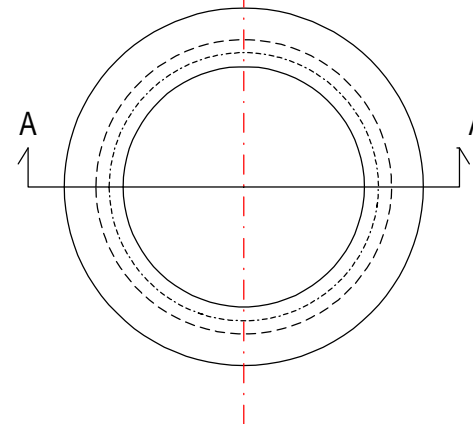
Micarta - Grade 97 ^{Note 1}

Recess for 1/8" x 2-1/4" OD "O" Ring

Recess for 1/8" x 2-1/2" OD "O" Ring



Cross Section - Phenolic Bearing



Recreated based on Pearson Yachts Drawing #P1368

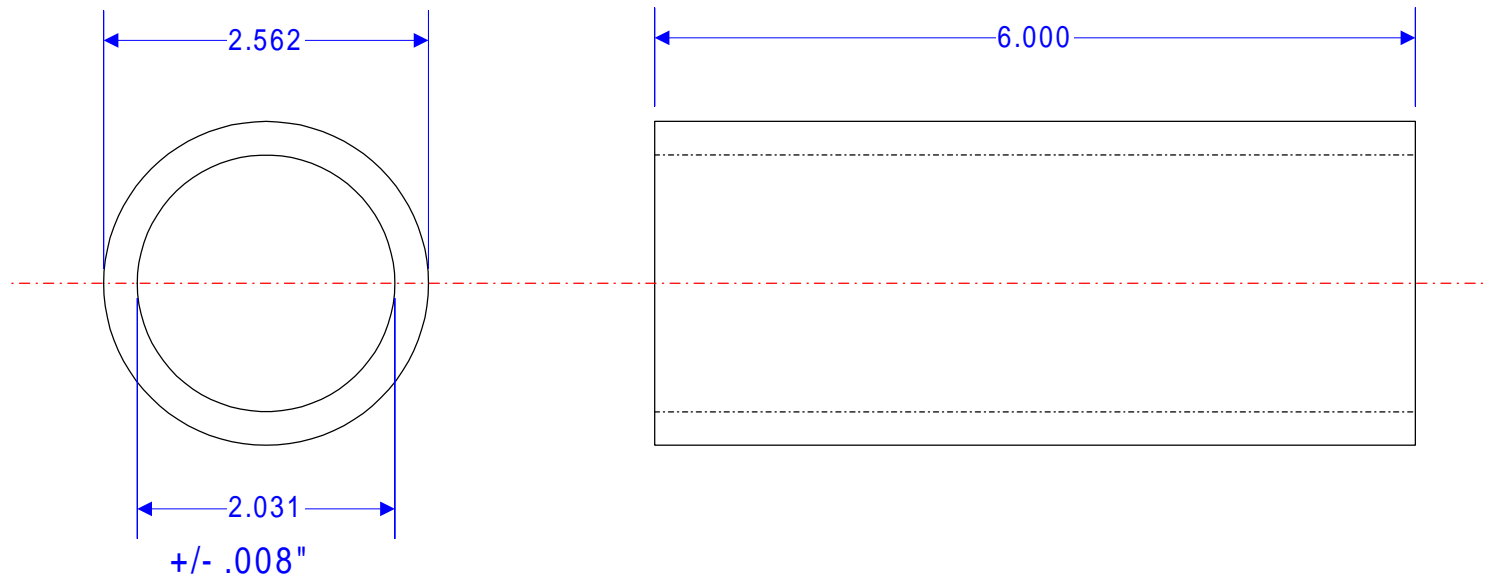
Dated 11/10/1966

Rev. A reduced washer from 3/8" to 1/8" Dated 12/02/1966

Rev. "B" Unreadable

Dated 12/16/1966

NOTE 1: An October 21st 1980 image of the Tiller Boss (Head) refers to the bearing material as USCOLITE.



Note:
Tolerance +/- 1/32" when not specified

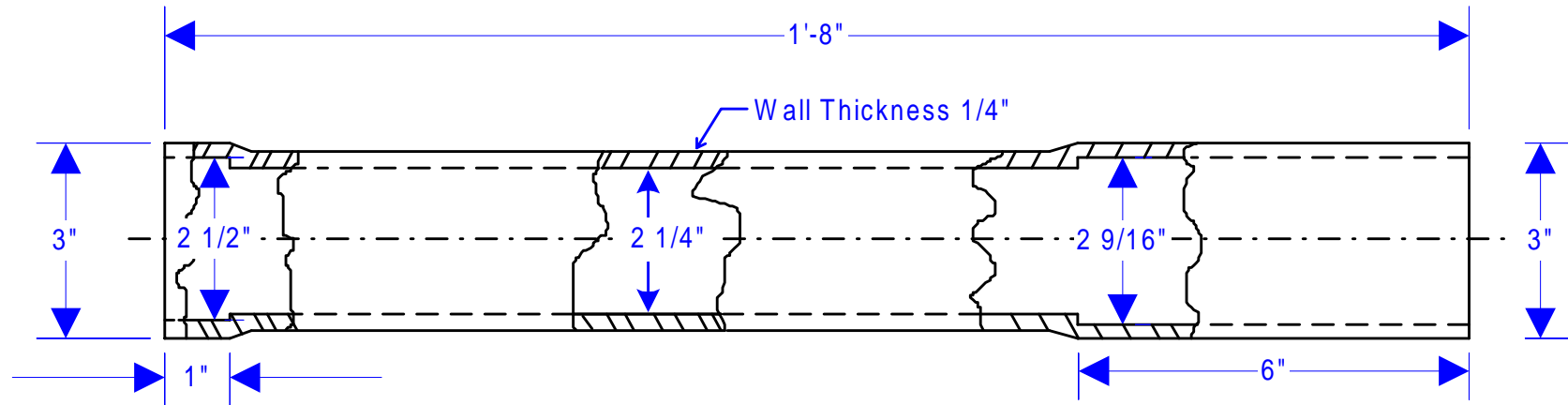
Material:
Micarta - Grade - 97^{Note 1}

Lower Rudder Bearing For Pearson Renegade

Recreated From Microfilmed Image of a Pearson Yacht Drawing
Original drawing information unreadable.
Microfilm Dated 10/12/1980

NOTE 1: An October 21st 1980 image of the Tiller Boss (Head) refers to the bearing material as USCOLITE.

PEARSON RENEGADE RUDDER TUBE (LOG)

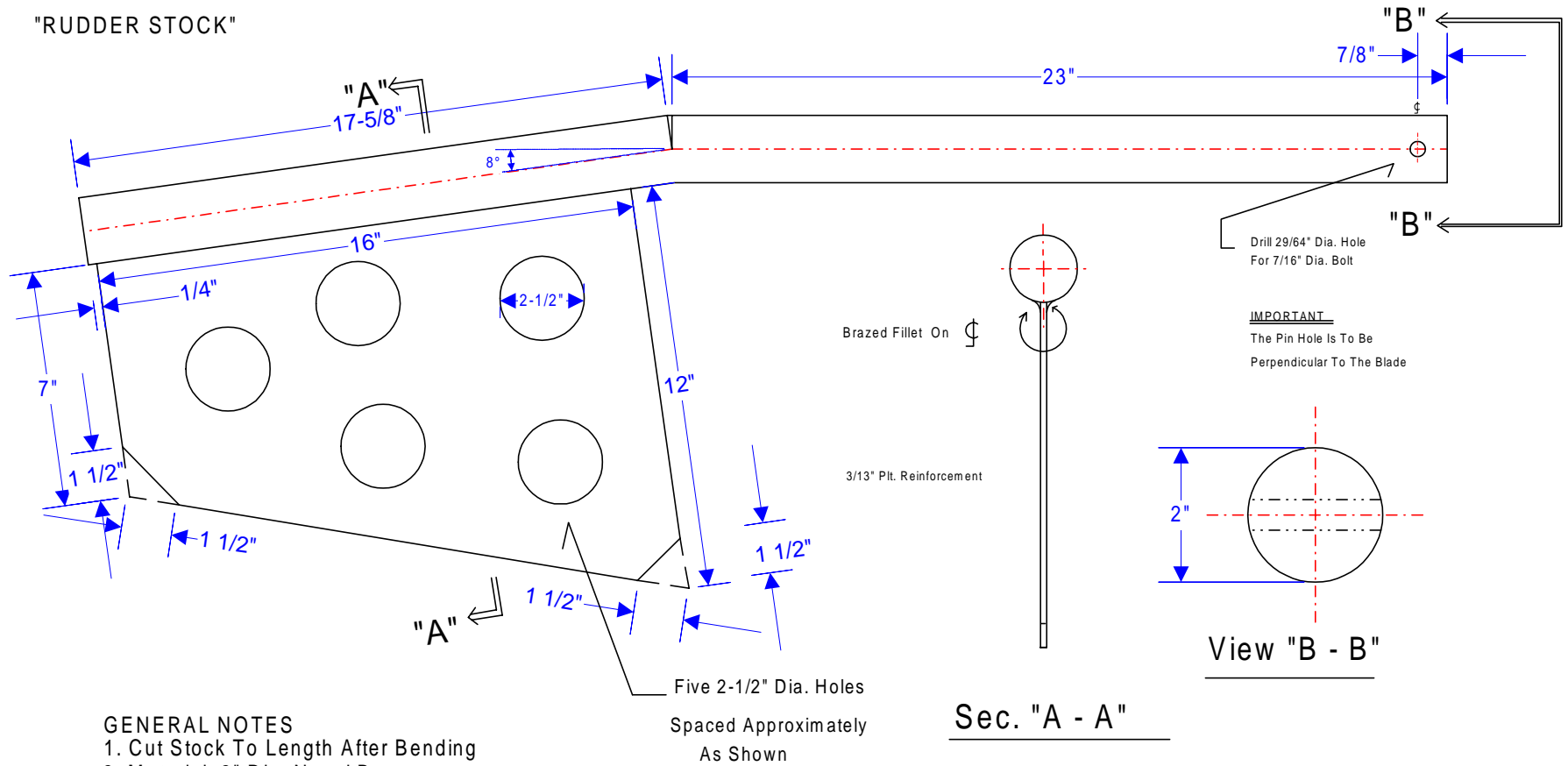


Fiberglass Rudder Tube (Log)
Reconstructed From Pearson Yachts Drawing #P1372
Dated 10-7-68
Rev "A" Shortened Tube From 22" To 20"

Note that the Upper Bearing Drawing Date is the date of the original drawing creation while the Rudder Tube is the latest revision date and no creation date is available.

PEARSON RENEGADE RUDDER STOCK

RECREATED FROM PEARSON YACHTS DRAWING # P-1371 DATED: 11-15-66
"RUDDER STOCK"



GENERAL NOTES

1. Cut Stock To Length After Bending
2. Material: 2" Dia. Naval Bronze & 3/16" Plt. Naval Bronze

REVISIONS

(Boat 143 Up)

C) [Upper Length of Stock Changed From 26" 23", Also Pin Hole Dim 15/16" to 7/8"] 1-3-67
B) [Lengthened Stock 1/2"] 10-7-68
A) [Shortened Stock & (Deteted) Threads] 1-4-67

References:

1. Rudder Construction P-1360
2. Steering Gear Assembly P-1367